

## SOME PLANT SAFETY TIPS

### 1. IDENTIFY

all plants in and around your home. It is best to know the botanical name of the plant. Your local landscape or garden centre can help.

### 2. LABEL

each plant in your home with its botanical name. Placing the name on a piece of tape and attaching it to the bottom of the pot works well. Remember to use water-proof ink!

### 3. KEEP

houseplants, seeds and bulbs out of reach of children and pets.

### 4. TEACH

children never to put leaves, flowers, seeds, nuts or berries in their mouth without checking with an adult first.

### 5. NEVER

eat wild mushrooms. Some poisonous mushrooms look like mushrooms that are safe to eat.

### 6. REMEMBER

that any plant can cause choking or an unexpected reaction in some people. If a reaction occurs, **call 911**.

## What about plant care products?

Sometimes plants, flowers and lawns are treated with pesticides (insecticides and herbicides). These products may contain chemicals that can be harmful. Children should be kept off of freshly sprayed grass and away from freshly treated plants.

As with all potentially poisonous products, pesticides should be kept in their original containers and stored in a locked area out of reach of children.

## Protect your pets, too!

Our pets need protection just like our children. Plants and pesticides, as well as other poisons **can** cause problems for animals. Remember to keep your pets out of harm's way, and poisons out of pet's way.

## For more information about plants, visit:

Nova Scotia Museum of Natural History  
<http://museum.gov.ns.ca/poison/pplant2.htm>

### Acknowledgements

The IWK Regional Poison Centre thanks:  
 Marian Munro, Asst. Curator of Botany,  
 NS Museum of Natural History, Halifax, NS  
 Our corporate sponsor, Emera Inc., for their financial support.

Design: ArtWorks  
 Illustration: (children) Dawn Boylan



IWK Health Centre  
 5850/5980 University Avenue  
 PO Box 3070, Halifax, Nova Scotia  
 B3J 3G9 Canada

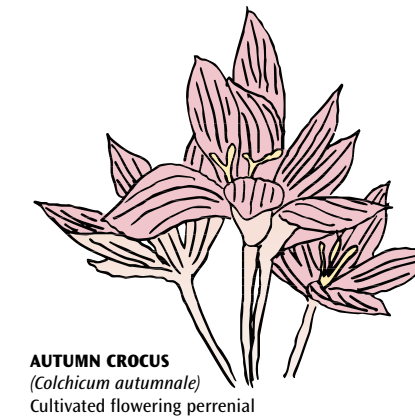


IWK Regional Poison Centre  
 Member, Canadian Association Regional Poison Control Centres  
 Member, American Association Regional Poison Control Centers  
**IN AN EMERGENCY CALL 911**  
 Non-Emergency (HRM): 470-8161  
 Toll-free in NS and PEI: 1-800-565-8161

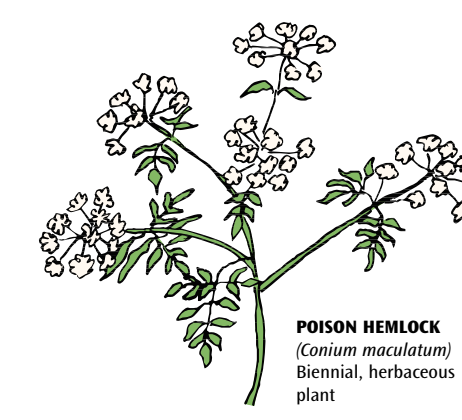


IWK Regional  
 Poison Centre

# Plants: A Guide for Poison Prevention



**AUTUMN CROCUS**  
*(Colchicum autumnale)*  
 Cultivated flowering perennial



**POISON HEMLOCK**  
*(Conium maculatum)*  
 Biennial, herbaceous plant



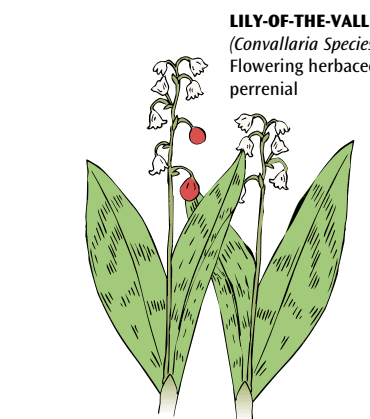
**CASTOR BEAN**  
*(Ricinus communis)*  
 Annual bush



**YEW**  
*(Taxus Species)*  
 Evergreen shrub



**FOXGLOVE**  
*(Digitalis Purpurea)*  
 Erect biennial herb



**LILY-OF-THE-VALLEY**  
*(Convallaria Species)*  
 Flowering herbaceous perennial

Each year the IWK Regional Poison Centre receives over 500 calls concerning exposure to plants. While the majority of these cases do not result in symptoms, a few plants do cause problems. Many of the more severe cases involve young children.

This brochure was developed to help you prevent poisonings as a result of exposures to plants. Common house and garden plants are listed according to their toxicity as non-poisonous, mildly poisonous or very poisonous.

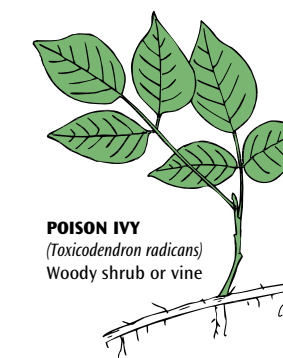
Plants in this guide are listed by both common name (in **bold**) and botanical name (in *italics* and brackets). The botanical name does not change from region to region, but the common name sometimes does. For example, what you call **Angel's Trumpet**, your neighbour might call **Jimson Weed**. Both are *Datura stramonium*. Sometimes two different plants have the same common name. For example, the common name **Jade Plant** may refer to *Crassula argentea* in some parts of Canada but to *Portulacaria Afra* in others.

On the back page of this brochure there is a list of safety tips you can use to make your home and yard more poison safe.

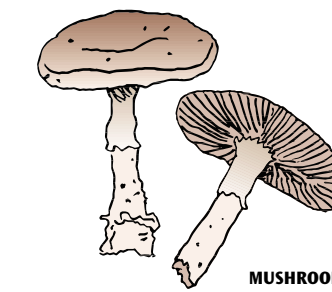
This guide contains only partial listings of poisonous and non-poisonous plants. If you have questions about plants not in this guide, or about any poisoning, call the IWK Regional Poison Centre at 1-800-565-8161 (toll-free in Nova Scotia and PEI) or 470-8161 (HRM).

In a Poisoning Emergency, **CALL 911**. You will be connected directly to the Poison Centre and will be able to speak to one of our nurses, pharmacists or doctors.

We are staffed 24 hours a day, everyday, to help you.



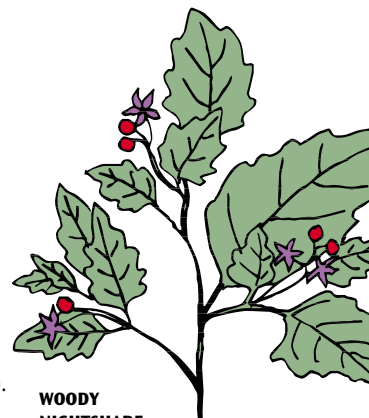
**POISON IVY**  
*(Toxicodendron radicans)*  
 Woody shrub or vine



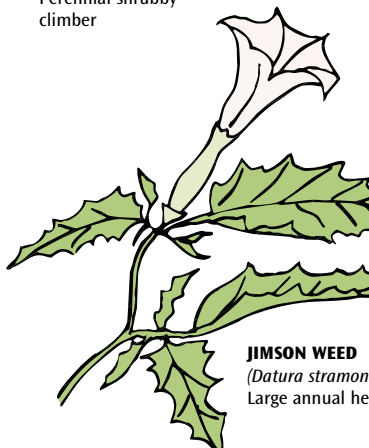
**MUSHROOM**  
*(Amanita species)*



**MONKSHOOD**  
*(Aconitum napellus)*  
 Tall perennial herb



**WOODY NIGHTSHADE**  
*(Solanum dulcamara)*  
 Perennial shrubby climber



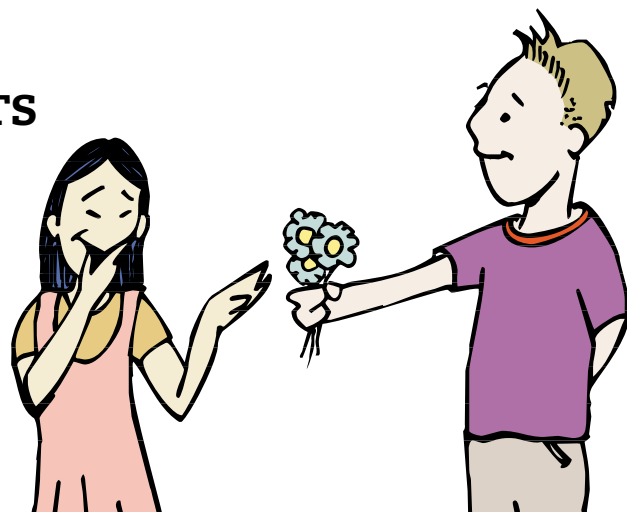
**JIMSON WEED**  
*(Datura stramonium)*  
 Large annual herb

PARTNERS IN POISON PREVENTION



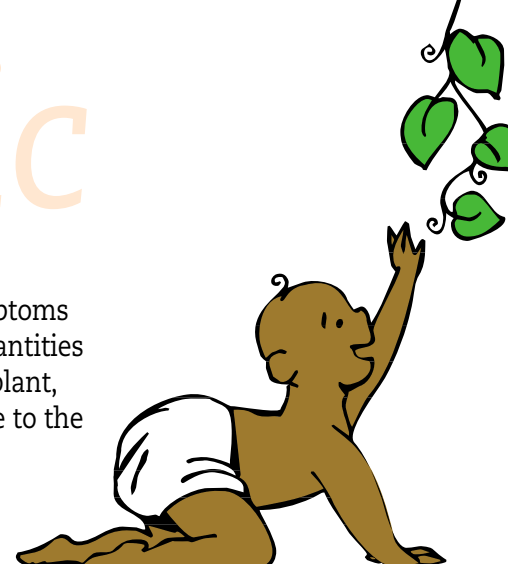
## COMMON NON-POISONOUS PLANTS

The following plants are generally considered to be safe or **non-poisonous**. It is important to remember, though, that children can choke on any plant. This is not a complete list.



## COMMON MILDLY POISONOUS PLANTS

The following plants are generally thought to produce only minor symptoms such as stomach upset, mouth and throat pain or skin rash. If large quantities are swallowed, or if a person frequently takes smaller amounts of the plant, more serious symptoms could develop. Some people are more sensitive to the toxic effects of plants than are others. This is not a complete list.



## COMMON VERY POISONOUS PLANTS

It is very rare for plants to cause life-threatening symptoms. **But it does happen.** The following plants are considered very poisonous. Eating even a small amount may lead to serious symptoms. If enough is ingested, life-threatening effects could develop. Always **CALL 911** even if you just suspect one of these plants has been ingested. This is not a complete list.



COMMON NAME	BOTANICAL NAME	TYPE
African violet	<i>(Saintpaulia ionantha)</i>	H & ORN
African daisy	<i>(Gerbera jamesonii)</i>	ORN
Aluminum plant	<i>(Pilea cadierei)</i>	ORN
Aralia, false	<i>(Dizygotheca elegantissima)</i>	ORN
Aspidistra	<i>(Aspidistra species)</i>	ORN
Aster	<i>(Callistephus chinensis)</i>	ORN
Aster	<i>(Aster species)</i>	N & ORN
Baby's tears	<i>(Helxine soleirolii)</i>	ORN
Bead plant	<i>(Nertera granadensis)</i>	ORN
Begonia	<i>(Begonia species)</i>	ORN
Bird's nest fern	<i>(Asplenium serratum)</i>	ORN
Boston fern	<i>(Nephrolepis exalta)</i>	ORN
Camelia	<i>(Camelina sativa)</i>	ORN
Caragana	<i>(Caragania arborescens)</i>	ORN
Chinese evergreen	<i>(Aglaonema modestum)</i>	ORN
Christmas cactus	<i>(Zygocactus truncatus)</i>	H & ORN
Coleus	<i>(Coleus amboinicus)</i>	ORN
Corn plant	<i>(Dracaena fragrans)</i>	ORN
Creeping Jenny	<i>(Lysimachia nummularia)</i>	ORN
Creeping Charlie	<i>(Glechoma hederacea)</i>	ORN
Dahlia	<i>(Dahlia species)</i>	ORN
Dandelion	<i>(Taraxacum officinale)</i>	N
Dracaena	<i>(Dracaena marginata)</i>	ORN
Dragon tree	<i>(Dracaena draco)</i>	ORN
Dusty miller	<i>(Senecio cineraria)</i>	ORN
Eugenia	<i>(Eugenia aggregata)</i>	ORN
Flaming sword	<i>(Vriesea splendens)</i>	ORN
Fluffy ruffles fern	<i>(Nephrolepis exalta)</i>	ORN
Forget me not	<i>(Myosotis)</i>	ORN
Fuchsia	<i>(Fuchsia species)</i>	ORN
Gardenia	<i>(Gardenia jasminoides)</i>	ORN
Geranium	<i>(Pelargonium species)</i>	ORN
Gloxinia	<i>(Sinningia speciosa)</i>	ORN
Grape ivy	<i>(Cissus rhombifolia)</i>	ORN
Hawthorn	<i>(Crataegus species)</i>	N & ORN
Hens and Chickens fern	<i>(Echeveria agavoides)</i>	ORN
Hibiscus	<i>(Hibiscus sabradiffa)</i>	ORN
Hollyhock	<i>(Althaea rosea)</i>	ORN
Honeysuckle	<i>(Lonicera species)</i>	N & ORN
Hoya	<i>(Hoya naumanii)</i>	ORN
Ice plant	<i>(Aptenia cordifolia)</i>	ORN

COMMON NAME	BOTANICAL NAME	TYPE
Ice plant	<i>(Cyrophytum crystallinum)</i>	ORN
Impatiens	<i>(Impatiens species)</i>	ORN
Jade plant	<i>(Crassula argentea)</i>	ORN
Lace plant	<i>(Polygonum aubertii)</i>	ORN
Lace plant	<i>(Trachymene caerulea)</i>	ORN
Lilac	<i>(Syringa species)</i>	N & ORN
Lily, Easter	<i>(Lilium longiflorum)</i>	ORN
Lipstick plant	<i>(Aeschynanthus lobbianus)</i>	ORN
Magnolia	<i>(Magnolia acuminata)</i>	ORN
Monkey plant	<i>(Nimulus species)</i>	N & ORN
Mountain ash	<i>(Sorbus)</i>	N
Nasturtium	<i>(Tropaeolum majus)</i>	ORN
Norfolk Island Pine	<i>(Araucaria heterophylla)</i>	ORN
Palm, Bigleaf	<i>(Fatsia japonica)</i>	H
Peperomia	<i>(Peperomia argyreia)</i>	ORN
Petunia	<i>(Petunia)</i>	ORN
Piggyback plant	<i>(Tolmiea menziesii)</i>	ORN
Poinsettia	<i>(Euphorbia pulcherrima)</i>	H
Pony Tail plant	<i>(Beaucarnea recurvata)</i>	ORN
Prayer plant	<i>(Maranta leuconeura)</i>	ORN
Purple passion vine	<i>(Gynura aurantiaca)</i>	ORN
Rubber plant	<i>(Ficus elastica)</i>	ORN
Saskatoon berry	<i>(Amelanchier species)</i>	N
Sensitive plant	<i>(Mimosa pudica)</i>	ORN
Silver dollar	<i>(Lunaria annua)</i>	ORN
Snapdragon	<i>(Antirrhinum majus)</i>	ORN
Snowball bush	<i>(Viburnum)</i>	ORN
Spider plant	<i>(Chlorophytum comosum)</i>	ORN
Spirea	<i>(Spirea)</i>	N & ORN
Split leaf Philodendron	<i>(Monstera deliciosa)</i>	ORN & H
Staghorn fern	<i>(Platyceium bifurcatum)</i>	ORN
Sunflower	<i>(Helianthus annuus)</i>	ORN
Swedish ivy	<i>(Plectranthus australis)</i>	ORN
Sword fern	<i>(Nephrolepis exalta)</i>	ORN
Umbrella tree	<i>(Brassaia actinophylla)</i>	ORN
Urn plant	<i>(Aechmea fasciata)</i>	ORN
Wandering Jew	<i>(Tradescantia species)</i>	ORN
Wax plant	<i>(Hoya carmosa)</i>	ORN
Yucca	<i>(Yucca elata)</i>	ORN
Zebra plant	<i>(Cryptanthus zonatus)</i>	ORN

COMMON NAME	BOTANICAL NAME	TYPE
Alfalfa	<i>(Medicago sativa)</i>	CROP
Aloe Vera	<i>(Aloe variegata)</i>	H
Alsike clover	<i>(Trifolium hybridum)</i>	CROP
Amaryllis	<i>(Amaryllis species)</i>	H
Asparagus fern	<i>(A. plumosus, A. asparagoides)</i>	H
Baneberry	<i>(Actaea species)</i>	N
Black walnut	<i>(Juglans nigra)</i>	ORN
Black-Eyed Susan	<i>(Rudbeckia hirta)</i>	ORN
Black locust	<i>(Robinia pseudoacacia)</i>	N
Black cherry	<i>(Prunus serotina)</i>	N
Bloodroot	<i>(Sanguinaria canadensis)</i>	N
Blue cohosh	<i>(Caulophyllum thalictroides)</i>	N
Bracken fern	<i>(Pteridium aquilinum)</i>	N
Broad bean	<i>(Vicia faba)</i>	CROP
Buckthorns	<i>(Rhamnus species)</i>	N
Buck-wheat	<i>(Fagopyrum esculentum)</i>	N & CROP
Burning bush	<i>(Euonymus atropurpurea)</i>	ORN
Buttercup	<i>(Ranunculus species)</i>	N
Calla Lily	<i>(Zantedeschia species)</i>	N & H
Cardinal flower	<i>(Lobelia cardinalis)</i>	ORN
Carnation	<i>(Dianthus caryophyllus)</i>	ORN
Century plant	<i>(Agave americana)</i>	H
Chinese lantern	<i>(Abutilon hybridum)</i>	ORN
Chrysanthemum	<i>(Chrysanthemum species)</i>	N & ORN
Common Hops	<i>(Humulus lupulus)</i>	N & CROP
Common comfrey	<i>(Symphytum officinale)</i>	N
Common Groundsel	<i>(Senecio vulgaris)</i>	N
Croton	<i>(Codiaeum species)</i>	H
Crown-of-Thorns	<i>(Euphorbia millii)</i>	H
Cyclamen	<i>(Cyclamen)</i>	H
Daffodil	<i>(Narcissus)</i>	ORN
Delphinium	<i>(Delphinium)</i>	ORN
Dieffenbachia	<i>(Dieffenbachia species)</i>	H
Dogwood	<i>(Cornus species)</i>	N & ORN
Dutchman's breeches	<i>(Dicentra cucullaria)</i>	N & ORN
Elephant's ear	<i>(Caladium species)</i>	H
Eucalyptus	<i>(Eucalyptus species)</i>	H
Garden sorrel	<i>(Rumex acetosa)</i>	N
Hogweed	<i>(Heracleum sphondylium)</i>	N
Celandine, Lesser	<i>(Chelidonium majus)</i>	N & ORN
Ground cherry	<i>(Physalis)</i>	ORN
Holly	<i>(Ilex species)</i>	N & ORN
Horse chestnut	<i>(Aesculus hippocastanum)</i>	N & ORN
Hounds tongue	<i>(Cynoglossum amabile)</i>	N & ORN

COMMON NAME	BOTANICAL NAME	TYPE
Hyacinth	<i>(Hyacinthus orientalis)</i>	ORN
Hydrangea	<i>(Hydrangea macrophylla)</i>	ORN
English oak	<i>(Quercus robur)</i>	N & ORN
Iris	<i>(Iris species)</i>	N & ORN
Ivy	<i>(Hedera Helix)</i>	H & ORN
Jack-in-the-Pulpit	<i>(Arisaema triphyllum)</i>	N
Jerusalem cherry	<i>(Solanum pseudocapsicum)</i>	ORN
Kaffir lily	<i>(Clivia miniata)</i>	ORN
Lady's slipper	<i>(Cypripedium species)</i>	N
Lamb's Ears	<i>(Stachys byzantina)</i>	N
Larkspur	<i>(Delphinium species)</i>	ORN
Lupine	<i>(Lupinus species)</i>	N & ORN
Marsh Marigold	<i>(Caltha palustris)</i>	N & ORN
Marsh arrowgrass	<i>(Triglochin palustris)</i>	N
Miniature orange tree	<i>(Citrus mitis)</i>	H
Mistletoe, American	<i>(Phoradendron flavescens)</i>	H
Morning glory	<i>(Ipomoea species)</i>	ORN
Motherwort	<i>(Leonurus cardiaca)</i>	N
Nettles	<i>(Urtica species)</i>	N
Nightshade (deadly, woody)	<i>(Solanum dulcamara)</i>	N
Pencil tree	<i>(Euphobia tirucalli)</i>	H
Poison ivy	<i>(Toxicodendron radicans)</i>	N
Poppy, Common	<i>(Papaver species)</i>	ORN
Primrose	<i>(Primula species)</i>	ORN & H
Red Berried Elder	<i>(Sambucus pubens)</i>	N
Red maple	<i>(Acer rubrum)</i>	N
Red clover	<i>(Trifolium pratense)</i>	N & CROP
Red oak	<i>(Quercus rubra)</i>	N
Reed canary grass	<i>(Phalaris species)</i>	N & ORN
Rhododendron Arborescens	<i>(Rhododendron arborescens)</i>	N & ORN
Rhubarb	<i>(Genus rheum)</i>	CROP
Sneezeweed	<i>(Helenium flexosum)</i>	ORN
Snowdrop	<i>(Galanthus nivalis)</i>	ORN
St. John's Wort	<i>(Hypericum species)</i>	N & ORN
Star of Bethlehem	<i>(Ornithogalum umbellatum)</i>	ORN
Tansy	<i>(Chrysanthemum vulgare)</i>	N
Tulip	<i>(Tupila species)</i>	ORN
Goldenrods	<i>(Solidago species)</i>	N & ORN
Virginia creeper	<i>(Parthenocissus quinquefolia)</i>	N & ORN
White clover	<i>(Trifolium repens)</i>	N & CROP
Wild cabbage	<i>(Brassica oleracea)</i>	N & CROP
Wild parsnip	<i>(Pastinaca species)</i>	N
Wisteria	<i>(Wisteria floribunda)</i>	ORN
Yellow rocket	<i>(Barbarea vulgaris)</i>	N

COMMON NAME	BOTANICAL NAME	TYPE
Alder buckthorn	<i>(Rhamnus frangula)</i>	N
Angel's trumpet/Jimson Weed	<i>(Datura stramonium)</i>	N
Astragalus	<i>(Astragalus species)</i>	N & ORN
Autumn crocus	<i>(Colchicum autumnale)</i>	ORN
Black henbane	<i>(Hyoscyamus niger)</i>	N
Blueweed	<i>(Echium vulgare)</i>	N
Calico bush	<i>(Kalmia latifolia)</i>	N & ORN
Canadian milk-vetch	<i>(Astragalus canadensis)</i>	N & ORN
Castor bean	<i>(Ricinus communis)</i>	ORN
Corn poppy	<i>(Papaver rhoeas)</i>	ORN
Cowbane	<i>(Cicuta maculata)</i>	N
Daphne	<i>(Daphne species)</i>	N & ORN
Yew	<i>(Taxus species)</i>	N & ORN
False helleborne	<i>(Veratrum californicum)</i>	ORN
Foxglove	<i>(Digitalis purpurea)</i>	ORN
Glory lily	<i>(Gloriosa)</i>	ORN

COMMON NAME	BOTANICAL NAME	TYPE
Groundsels	<i>(Senecio species)</i>	N
Dogbane	<i>(Apocynon species)</i>	N
Jequirity bean	<i>(Abrus precatorius)</i>	imported decorative bead
Lantana	<i>(Lantana camara)</i>	H & ORN
Laurel	<i>(Kalmia species)</i>	N & ORN
Lily-of-the-valley	<i>(Convallaria species)</i>	N & ORN
Milkweeds	<i>(Asclepias species)</i>	N & ORN
Monkshood	<i>(Aconitum napellus)</i>	ORN
Mushrooms	(3000+ species in NS and only around twelve are safe)	
Northern water-hemlock	<i>(Cicuta species)</i>	N
Poison hemlock	<i>(Conium maculatum)</i>	N
Precatory pea	<i>(Abrus precatorius)</i>	imported as jewelry
Siberian scilla	<i>(Scilla siberica)</i>	ORN
Tobacco (ornamental)	<i>(Nicotiana tabacum)</i>	CROP
Water hemlock	<i>(Genus cicuta)</i>	N

ORN = ornamental plant; H = house plant; CROP = food crop; N = native to Nova Scotia or naturalized. Note: Common names of plants may vary by geographic location.

## Call 911 What to do in Case of a Poisoning

When a child puts part of any plant in his/her mouth the immediate concern is choking. Make sure all visible plant material is removed from his/her mouth. Then **Call 911**. They will connect you immediately to the **IWK Regional Poison Centre**.

Here at the Poison Centre we will ask you questions to help identify the plant and the amount taken. Together we will determine if the patient needs to be treated.

If you have any questions about possibly poisonous plants, whether listed here or not, please call the IWK Regional Poison Centre at 1-800-565-8161 (toll-free in NS and PEI) or 470-8161 (HRM).

